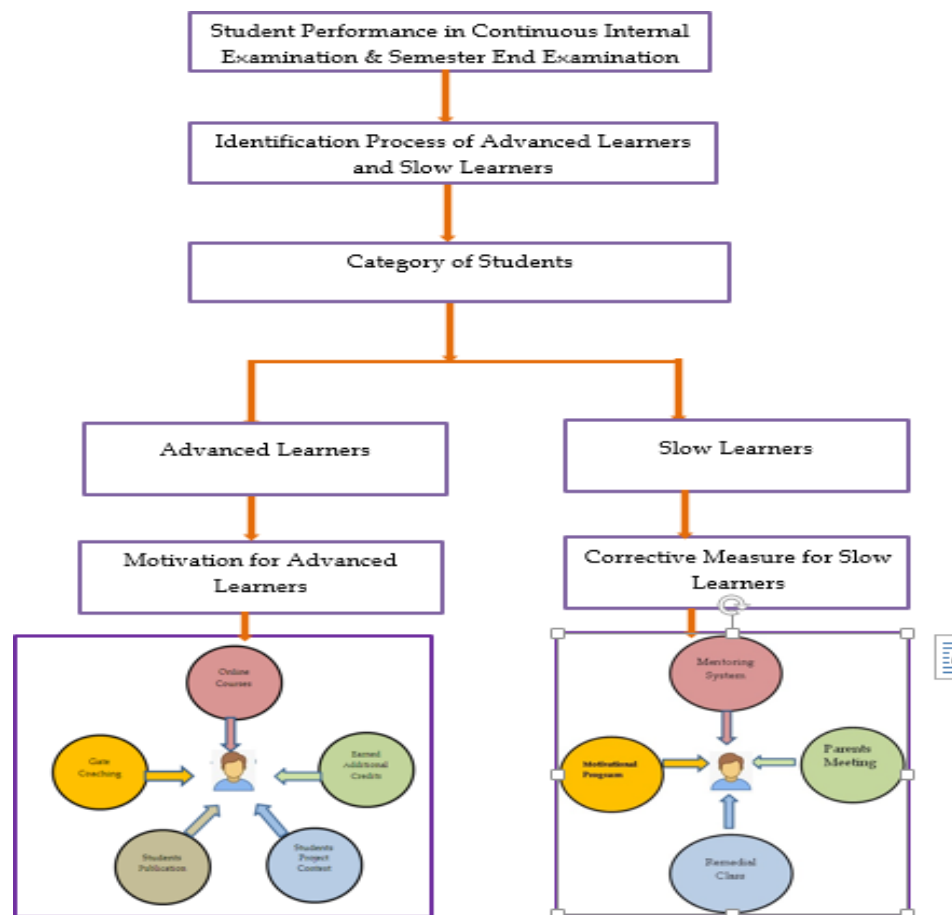


## 2.2.1 Identification Process of Slow Learners and Advanced Learners

### Process used to identify the Advanced Learners and Slow Learners

The College adopts a well-defined mechanism to identify the Bright, Average and Weak students. The process involved in identification process is shown in Figure.

The College has an independent system for student support and mentoring. For a batch of 15 to 20 students a Faculty member is allotted as a mentor. The mentor guides and motivates the students towards their development and betterment in their academic and non-academic activities such as sports, extracurricular, co-curricular, behavioral and psychological phenomena. The mentors are instrumental in identifying Advanced Learners and Slow Learners. The performance of the students in Continuous Internal Examination (CIE) and Semester End Examination (SEE) is taken as the major input in identifying Advanced Learners and Slow Learners. If the score of the student is less than 50 in one or more courses in CIE/SEE they are considered as Slow Learners.



**Identification Process of Advanced Learners and Slow Learners**

## Advanced Learners:

As the advanced learners are independent learners, they are encouraged to participate in various technical contests, learn through self-learning online platforms and equip themselves for their prospects.

### **The advanced learners are encouraged through the following initiatives:**

- To participate in more number of paper presentations, symposiums, conferences, mini-project exhibitions, Innovative Project Contest and My Innovative Business Plan competition
- Preference is given to them to participate in programs like Infosys Campus Connect, internship, innovation contests, R&D and consultancy activities
- Through Career Guidance guest lectures, the students are motivated to appear for competitive exams like GATE and GRE
- The students can borrow more books from the Library.
- Self-learning courses facilitated with digital library resources like Swayam and MOOC courses
- Extra credit courses are offered to enable the students to earn extra credits besides their regular credits in UG programmes. Massive Open Online Courses offered by SWAYAM, NPTEL, etc. are also recognised as extra credit courses

## Slow Learners:

The slow learners are counselled by the mentors and special learning methodologies are adopted to enhance their learning capabilities. The following special measures are taken for slow learning students:

- Slow learners are counselled by the mentor, and the Head of the Department periodically
- Special Remedial classes are organized for slow learners where the students can interact comfortably with the faculty to clarify their doubts
- Question Bank Tutorial Questions are provided
- Course material are provided to the slow learners for easy learning
- Additional Assessment tests are conducted to improve their performance



**Dr. A. Senthil Kumar**  
PRINCIPAL  
**SETHU INSTITUTE OF TECHNOLOGY**  
Pulloor, Kariapatti - 626 115  
Virudhunagar District